

2003-2009 AUDI A4/S4 CONVERTIBLE TOP INSTALLATION TIPS

Tools Required: Flat-tip & Phillips-head screwdrivers, 2" putty knife, curved needle & thread, needle-nose plier, flat-tip plier, rivet tool with 4mm rivets, rubber hammer, 3' stiff wire hook (2.5 mm dia.)

TOP REMOVAL

- 1 Partially open Top to start removing 9 Phillips-head screws across header retainer.



- 2 Remove left & right front plastic retainers from Top frame.

- 3 Release header cover trim panel, attached with push clips.



- 4** Remove 3-piece interlocking retainer strips to release Top from header.



- 5** Use a flat-head screwdriver to pry out and remove header extrusion from header bow.

- 6** Release front ends of tension cables from frame.

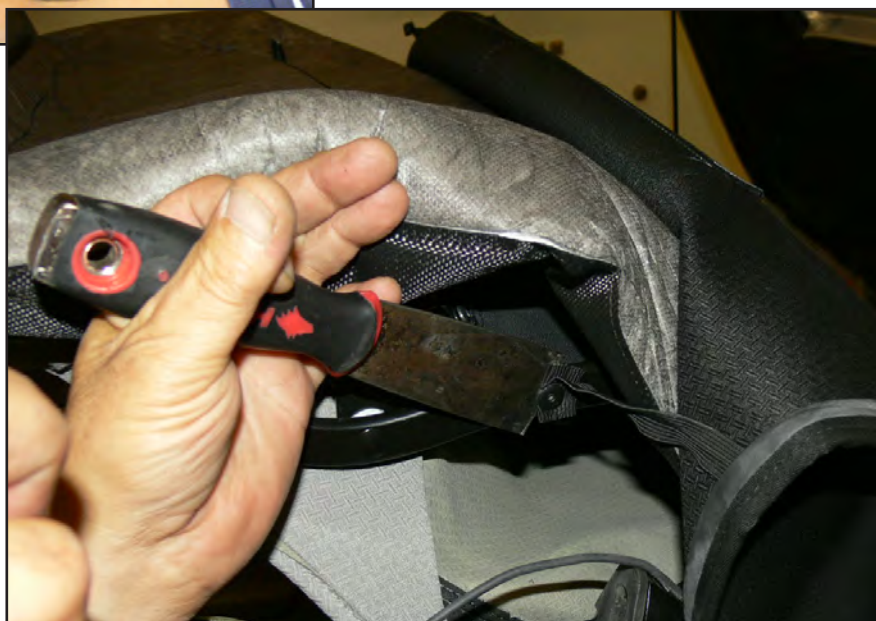


- 7** Remove zipper stops (starting front to rear) from listing zippers and unzip from Top pad.



- 8** Pull out tension cables from Top sleeves (left & right).

- 9** Cut or drill rivets to release side support straps (left & right).



- 10** Release left & right b-pillar plastic strips from Top frame.

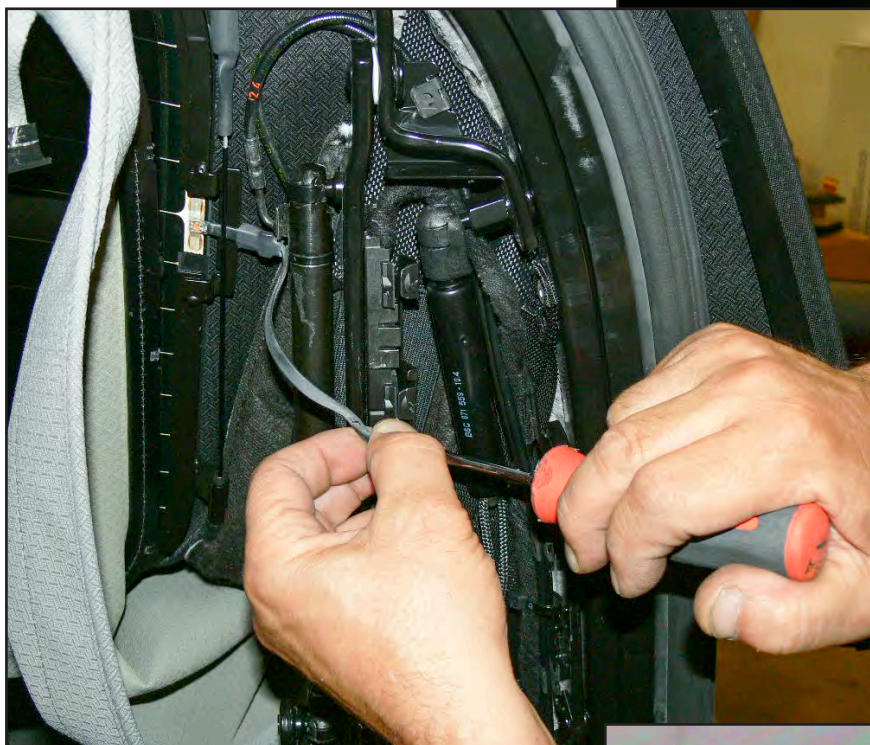


- 11** Remove headliner extrusion from bottom rail.

- 12** Force out plastic retainer that attaches rear of Top to bottom rail (careful not to lose metal clips).

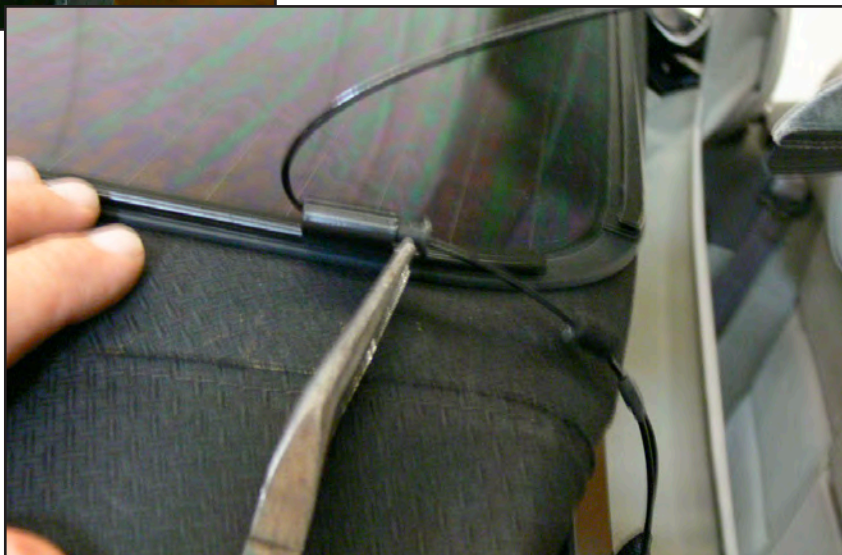


- 13** Release headliner window ring from retaining channel around rear window.



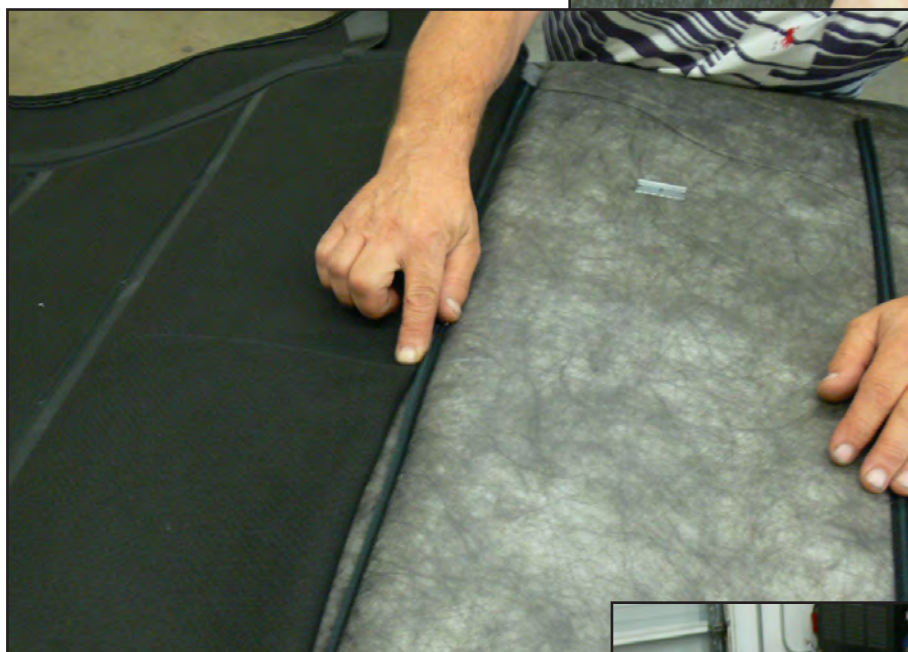
- 14** Disconnect left & right defroster leads. Cut zip tie and open cover to release defrost wire, and then unplug connector.

- 15** Remove "rubber insert" to release guide cable from window bracket.



TOP INSTALL

- 16** Locate zipper slide (taped to window bracket) to start installation.

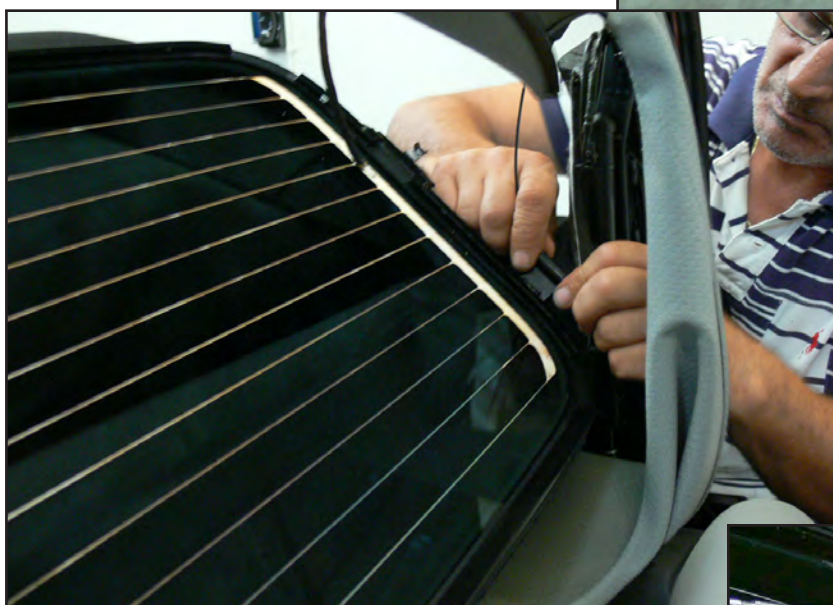


- 17** Lay Top over Top pad, find and mark center of each listing to start zipper connection.



- 18** Align and zip starting at rear (#4) listing zipper to the Top pad using the provided zipper slide.

- 19** Remove zipper slide and hand stitch stops to lock zipper at each end. Repeat on remaining zippers.



- 20** Connect support cables to window brackets and attach "rubber insert" to secure.



- 21** Connect left & right defroster leads. Attach wire connector, close the cover and use zip tie to lock.

- 22** Connect side tension cable to 3' stiff wire and pull cable through sleeve (repeat on opposite side).



- 23** Attach tension cable ends to Top frame.

- 24** Attach front edge of Top extrusion to header bow and force to insert 3-piece interlocking retainer strips to lock in place.



- 25** Transfer original clips to left & right b-pillar retainers, and then attach Top by forcing retainers into frame.



- 26** Transfer original clips to Top rear plastic retainer, insert retainer into bottom rail and force to lock.

- 27** Attach headliner extrusion to bottom rail and force to secure.



28 Attach left & right side front retainer to Top frame.



29 Position weather seal retainer to header.

30 Install header trim cover (attach with push clips).



- 31** Secure weather seal rail and trim cover to header with 9 Phillips-head screws.



- 32** Rivet to secure side support straps to frame.

- 33** Attach headliner window ring to retainer channel around rear window.



